

A circular walk from the Parade



VISIT LISKEARD
FOR THE EXPLORER IN YOU

Distance: approx. 4½ miles (7 km). Allow 3 hours for this circular walk.
Surfaces: Backroads and footpaths. Some stretches can be muddy - waterproof shoes / boots recommended.
Gradients: Some challenging gradients.
Obstacles: Stiles, gates, steps and a stream to cross.

Route Guide



This walk starts and finishes on the Parade, Liskeard, and winds to the north of the town through stunning scenery and rich heritage. The route takes in part of the Caradon Trail, a fully-signed on-road route to enjoy on foot, horseback or by bike.

(All information is provided in good faith and for guidance only. Numbers in the text refer to the detailed route map on page 2.)

From the Parade, head North up Barras Place taking the left-hand fork at the top **1** to go steeply down Venslooe Hill and up the other side, entering an Area of Great Landscape Value. This is a typical deep Cornish lane, with medieval field systems either side, bordered by many mature trees including oak and beech.

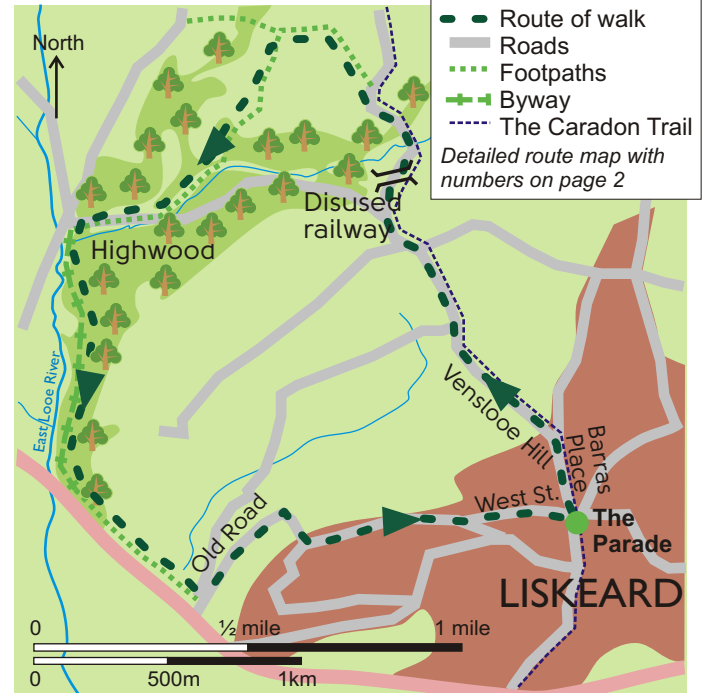
Continue downhill beneath the disused Liskeard and Caradon Railway bridge **2** spotting the old milestone on your left. Then pass over a tributary of the Looe River, to climb until you reach a footpath sign in a steep bank on your left **3**. Go over this stile, straight ahead to the next one, and across this field to steps leading down through a small copse into Treworgey Manor drive **4**.



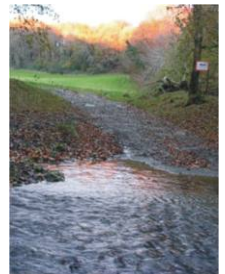
The old Liskeard and Caradon Railway

Opened in 1844 to carry tin, copper and granite from Caradon Hill to Moorswater, the railway was initially powered by gravity and horses. A locomotive was added in 1862. Special passenger excursions to the Cheesewring were also arranged. But the railway was not licensed to carry passengers and so could not charge fares; instead, charges were made for carrying their hats, coats and parcels!

When the mines and quarries declined, the railway's finances failed and it closed in 1917, when the track was removed to aid the war effort during World War I.



Bear left here, and again opposite the house, to go through wrought iron gates into parkland. Go ahead into woodland, emerging through a gate at the far end to walk diagonally down to the corner of the field, crossing a small stream (which can become swollen in the winter months) and either turn right though the field or follow the lane to a four-way junction **5**, turning sharp left down a track by the side of the solitary house.

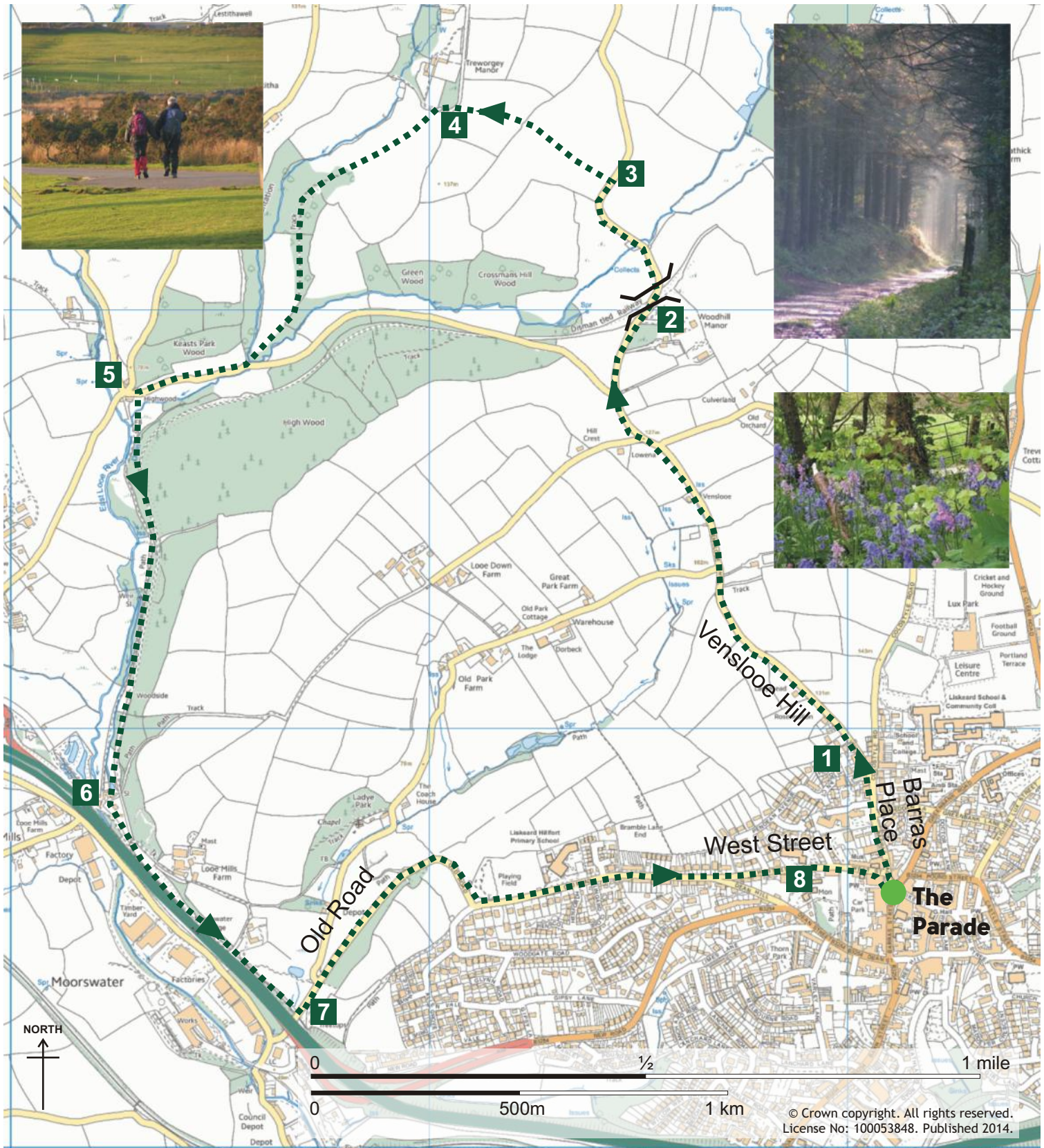


This track runs parallel with the stream on your right and High Wood on the left, all the way through to Looe Mills - it can be very muddy at times but worth it for the scenery! Note the old tunnel beneath the railway trackbed, and the mill house at the end.



6 Beyond the toll lodge, turn left along the path beside the A38, until you reach a minor road by an underpass **7**. Turn left here and climb the steep wooded hill (Old Road), being rewarded with excellent views across the valley towards Old Park, returning to Liskeard Parade along West Street **8**.

Rag an hwithrer ynnos yw Lyskerrys



A circular walk from the Parade

For more details of the route, use OS Explorer map 107, St. Austell and Liskeard



Follow the Countryside Code - Respect other people;
Protect the natural environment; Enjoy the outdoors.
(Visit www.naturalengland.org.uk for more details)



VISIT LISKEARD
FOR THE EXPLORER IN YOU

www.visitliskeard.co.uk

LISKEARD COUNCIL
WORKING FOR YOU